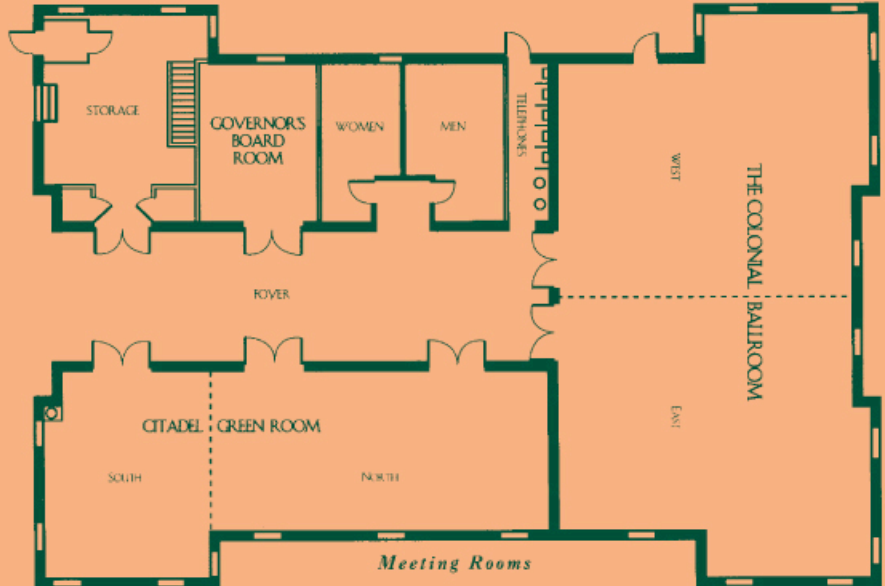




**MEETING SPACE THAT MEETS YOUR NEEDS**



With multiple options for space configuration—the Embassy Suites Historic Charleston can accommodate your group with ease, and with the artful attention to detail you desire. Hosting groups of up to 500 people—with banquet seating for 180—the hotel also offers smaller break-away of function rooms, a board room, and two hospitality suites.

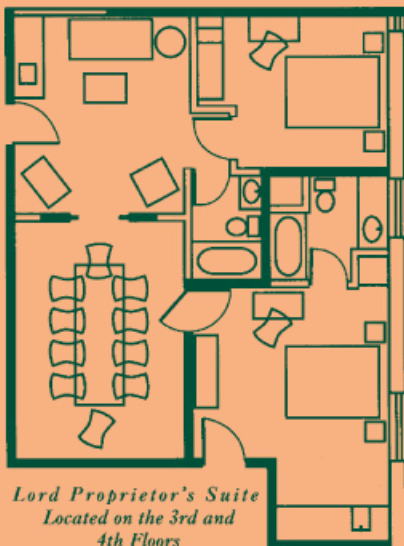


**SPACIOUS ACCOMMODATIONS IN AN ELEGANT SETTING**

MEETING ROOM	SQ FT	RECEPTION	BANQUET	THEATRE	CLASSROOM	CONFERENCE	U-SHAPE	HOLLOW SQUARE
Colonial Ballroom	2250	240	180	240	170	50	62	66
Colonial Ballroom East	1125	120	90	120	75	25	34	30
Colonial Ballroom West	1125	120	90	120	75	25	34	30
Citadel Green Room	1212	130	100	130	80	46	30	34
Citadel Green Room North	756	80	60	85	50	18	25	20
Citadel Green Room South	456	50	35	50	30	14	14	15
Governor's Board Room	270	30	20	30	20	10	—	10
Lord Proprietor's Suite 300	372	40	10	—	—	10	—	—
Lord Proprietor's Suite 400	372	40	10	—	—	10	—	—
Atrium	4905	515	410	545	340	10	—	—

**THE HEART OF EMBASSY SUITES HISTORIC CHARLESTON**

The focal point of Embassy Suites Historic Charleston is our beautiful indoor atrium. Surrounded by balconies, the soaring space is filled with sunlight, lush greenery, and the quiet, soothing sounds of a central fountain. It's the perfect place to enjoy a drink, meet friends or simply relax and read the newspaper.



*Lord Proprietor's Suite  
Located on the 3rd and 4th Floors*

**1-800-Embassy**  
(1-800-362-2779)



**EMBASSY SUITES  
HOTELS®  
HISTORIC DISTRICT**

